



**PERFORMANCE**

In addition to foreseeing the market's application needs, Gefran forms partnerships with its customers to find **the best way to optimise and boost the performance of various applications.** Gefran products communicate with one another to provide integrated solutions, and can dialogue with devices by other companies thanks to compatibility with numerous fieldbuses.



**SERVICES**

**PRE AND POST SALES**

A team of Gefran experts works with the customer to select the ideal product for its application and to help install and configure devices (customercare@gefran.com).

**TRAINING**

Gefran offers a wide range of courses at different levels for the technical-commercial study of the Gefran product range as well as specific courses on demand.

**LAT 011** is Gefran's exclusive calibration service, offered on-site and at Gefran's modern laboratories. Gefran's LAT011 lab is part of the ACCREDIA circuit, and its **certifications, inspections, tests, and calibrations are recognised throughout the world.**



**FOOD**



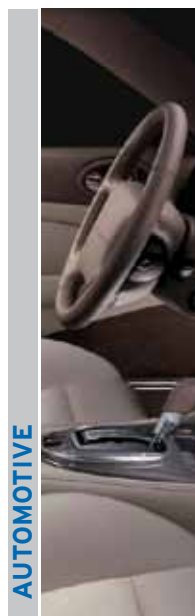
**GLASS**



**TEXTILE**



**ENERGY**



**AUTOMOTIVE**



**CERAMICS**



**INDUSTRIAL PRINTING**

# GEFRAN

## GEFRAN HEADQUARTER

Via Sebina, 74  
25050 PROVAGLIO D'ISEO (BS) ITALY  
Ph. +39 03098881  
Fax +39 0309839063

## Drive & Motion Control Unit

Via Carducci, 24  
21040 GERENZANO (VA) ITALY  
Ph. +39 02967601  
Fax +39 029682653  
info.motion@gefran.com

## Technical Assistance:

technohelp@gefran.com

## Customer Service

motioncustomer@gefran.com  
Ph. +39 02 96760500  
Fax +39 02 96760278

## GEFRAN BENELUX NV

ENA 23 Zone 3, nr. 3910  
Lammerdries-Zuid 14A  
B-2250 OLEN  
Ph. +32 (0) 14248181  
Fax +32 (0) 14248180  
info@gefran.be

## GEFRAN DEUTSCHLAND GmbH

Philipp-Reis-Straße 9a  
D-63500 Seligenstadt  
Ph. +49 (0) 61828090  
Fax +49 (0) 6182809222  
vertrieb@gefran.de

## SIEI AREG - GERMANY

Gottlieb-Daimler Strasse 17/3  
D-74385 - Pleidelsheim  
Ph. +49 (0) 7144 897360  
Fax +49 (0) 7144 8973697  
info@sieiareg.de

## GEFRAN SUISSE SA

Sandackerstrasse, 30  
9245 Oberbüren  
Ph. +41 71 9554020  
Fax +41 71 9554024  
office@gefran.ch

## SENSORMATE AG

Steigweg 8,  
CH-8355 Aadorf, Switzerland  
Ph. +41(0)52-2421818  
Fax +41(0)52-3661884  
<http://www.sensormate.ch>

## GEFRAN FRANCE SA

4, rue Jean Desparmet - BP 8237  
69355 LYON Cedex 08  
Ph. +33 (0) 478770300  
Fax +33 (0) 478770320  
commercial@gefran.fr

## GEFRAN UK Ltd

Capital House, Hadley Park East  
Telford  
TF1 6QJ  
Ph. +44 (0) 8452 604555  
Fax +44 (0) 8452 604556  
sales@gefran.co.uk

## GEFRAN ESPAÑA

Calle Vic, números 109-111  
08160 - MONTMELÓ  
(BARCELONA)  
Ph. +34 934982643  
Fax +34 935721571  
comercial.espana@gefran.es

## GEFRAN MIDDLE EAST ELEKTRIK VE ELEKTRONIK San. ve Tic. Ltd. Sti

Yesilkoy Mah. Ataturk  
Cad. No: 12/1 B1 Blok K:12  
D: 389 Bakirkoy /Istanbul TURKIYE  
Ph. +90212 465 91 21  
Fax +90212 465 91 22

## GEFRAN SOUTH AFRICA Pty Ltd.

Unit 10 North Precinet  
West Building  
Topaz Boulevard Montague Park,  
7411, Cape Town  
Ph. +27 21 5525985  
Fax +27 21 5525912

## GEFRAN SIEI Drives Technology Co., Ltd

No. 1285, Beihe Road, Jiading  
District, Shanghai, China 201807  
Ph. +86 21 69169898  
Fax +86 21 69169333  
info@gefransiei.com.cn

## GEFRAN SIEI Electric Pte. Ltd.

No. 1285, Beihe Road, Jiading  
District, Shanghai, China 201807  
Ph. +86 21 69169898  
Fax +86 21 69169333  
info@gefransiei.com.cn

## GEFRAN SIEI - ASIA

31 Ubi Road 1  
#02-07, Aztech Building  
Singapore 408694  
Ph. +65 6 8418300  
Fax +65 6 7428300  
info@gefan.com.sg

## GEFRAN INDIA

Survey No: 182/1 KH, Bhukum, Paud road,  
Taluka - Mulshi,  
Pune - 411 042, MH, INDIA  
Phone No.: +91-20-39394400  
Fax No.: +91-20-39394401  
gefran.india@gefran.in

## GEFRAN TAIWAN

No.141, Wenzhi Rd., Zhongli City,  
Taoyuan County 32054,  
Taiwan (R.O.C.)  
Ph. +886-3-4273697  
eddie.liao@gefransiei.com.sg

## GEFRAN Inc.

8 Lowell Avenue  
WINCHESTER - MA 01890  
Toll Free 1-888-888-4474  
Fax +1 (781) 7291468  
info.us@gefran.com

## GEFRAN BRASIL ELETROELETRÔNICA

Avenida Dr. Altino Arantes,  
377 Vila Clementino  
04042-032 SÃO PAULO - SP  
Ph. +55 (0) 1155851133  
Fax +55 (0) 1132974012  
comercial@gefran.com.br



FM 608910



[www.gefran.com](http://www.gefran.com)

ENG

# GEFRAN

## PRODUCT RANGE

# GEFRAN





## THE ACKNOWLEDGED INTERNATIONAL LEADER

Thanks to forty years of experience, Gefran is the world leader in the design and production of solutions for **measuring, controlling, and driving industrial production processes**. We have 14 branches in 12 countries and a network of over 80 worldwide distributors.



## QUALITY AND TECHNOLOGY

Gefran components are a **concentrate of technology**, the result of constant research and of **cooperation with major research centres**.

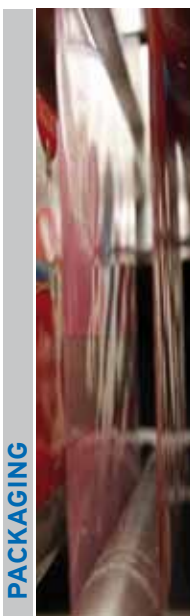
For this reason, Gefran is synonymous with **quality and expertise in the design and production of:**

- > **sensors** for measuring main variables such as **temperature, pressure, position and force**
- > **state-of-the-art components and solutions for indication and control**, satisfying demands for optimisation of processes and intelligent management of energy consumption
- > **automation platforms** of various complexities
- > **electronic drives and electric motors** in AC and DC for all industrial automation, lift, and photovoltaic needs.

**Gefran's know-how and experience guarantee continuity and tangible solutions.**



PLASTICS



PACKAGING



FLUID POWER



WOOD



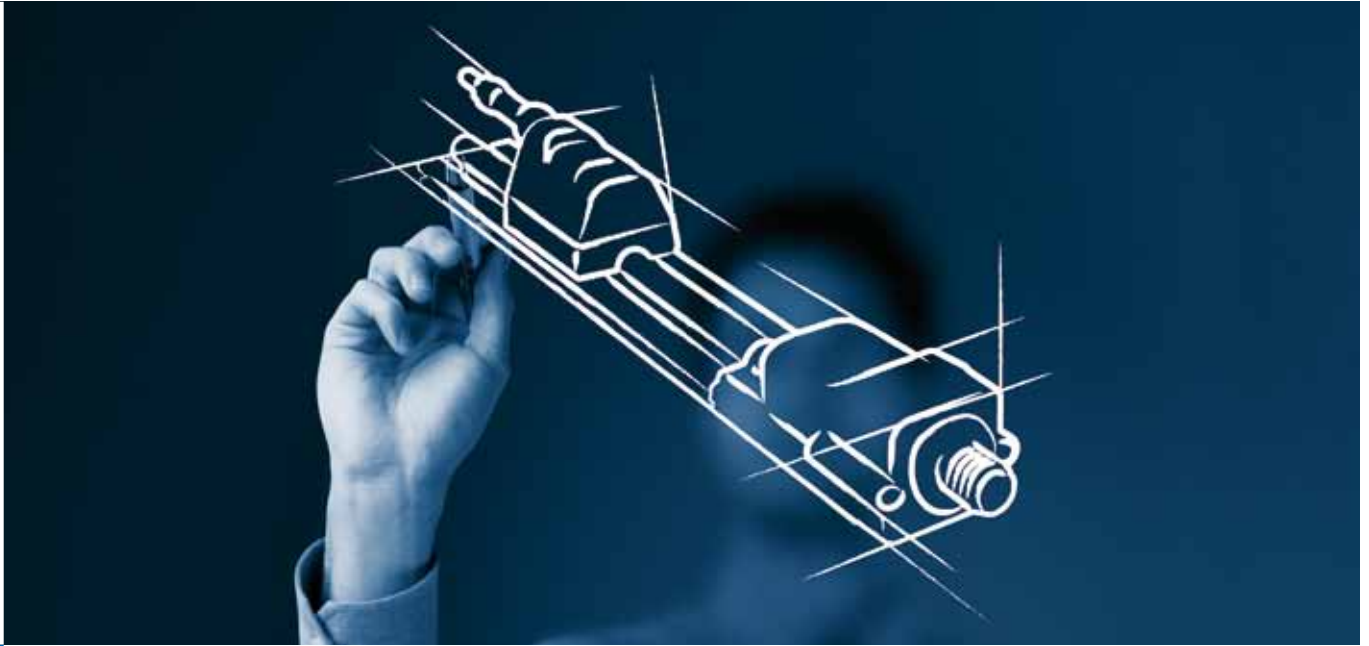
CHEMICAL/PHARMACEUTICAL



METAL



CIVIL LIFTING



## INDUSTRIAL PRESSURE TRANSDUCERS

For measuring fluids, liquids or gases - ideal for all industrial applications.  
ATEX versions available for use in potentially explosive atmospheres.



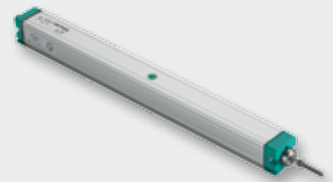
## MELT PRESSURE TRANSDUCERS

High temperature pressure transducers and transmitters are available with mercury filling, FDA-approved fluid, and fluid-free versions. Ideal for extrusion and injection applications.



## LINEAR POTENTIOMETRIC TRANSDUCERS

For measuring displacement of moving mechanical parts. Sturdy and versatile, ideal for the majority of industrial applications, even under very harsh conditions.



## LINEAR MAGNETOSTRICTIVE TRANSDUCERS

Created as the evolution of linear (potentiometric) displacement transmitters, Gefran magnetostrictives are designed for more complex applications, and now offer ONDA technology for simple installation, versatility, and excellent price/quality ratio.



## THERMOCOUPLES AND THERMORESISTANCES

Simple and reliable temperature sensors, with a wide selection according to required application, ambient conditions, work, temperature range and precision.



## LOAD CELLS AND FORCE TRANSDUCERS

For measuring the tension of plastic films and tapes, weight and measurement of compression loads and reaction force.





## CONTROLLERS

A wide range of panel-mounted instruments for precise control of temperature, pressure, force, position, humidity, etc. Available in general purpose, advanced and high performance versions, with control and recording functions.



## INDICATORS

Panel-mounted, configurable microprocessors to display temperature, pressure, flow rate, force, position, voltage, current, humidity, etc. With programmable alarms and diagnostics.



## GEFLEX LINE

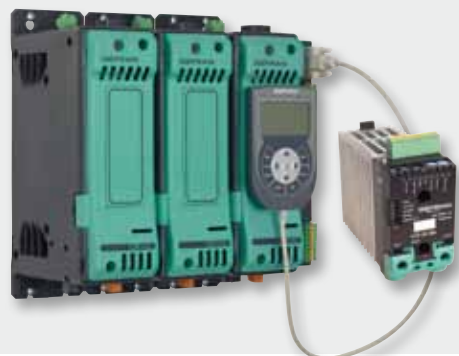
### MODULAR POWER CONTROLLERS

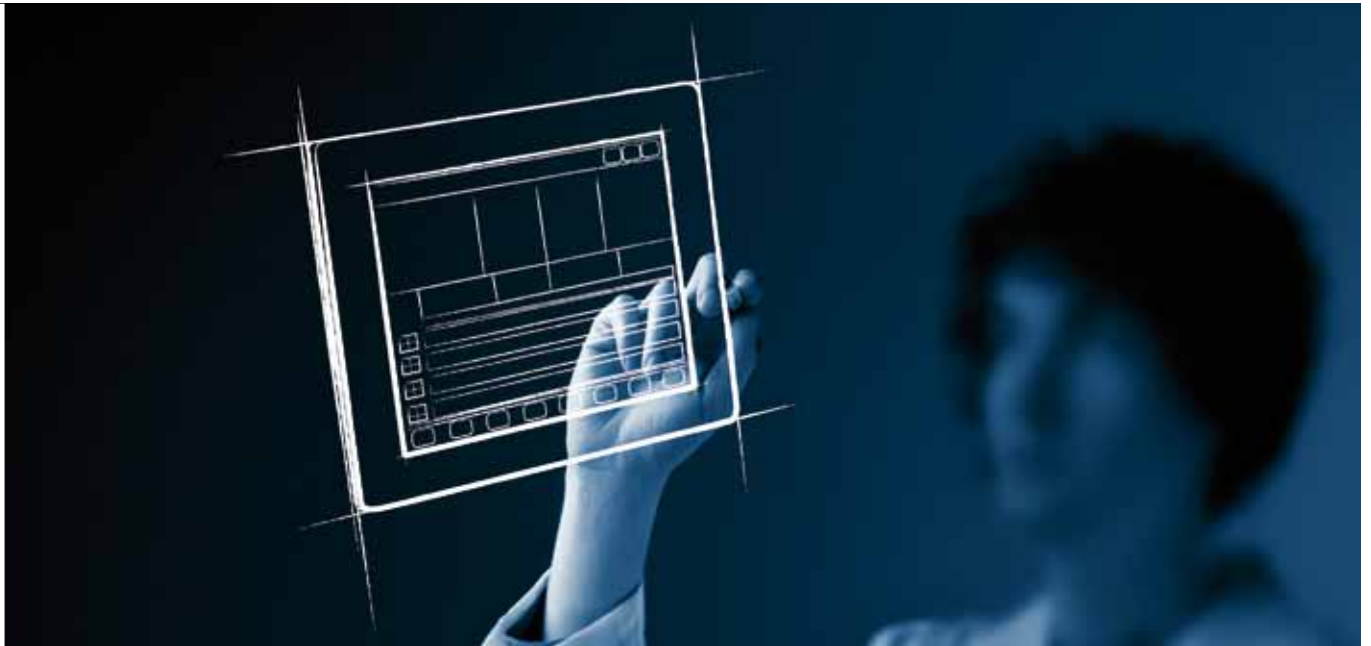
*All-in-one* units for rear-panel installation that combine microprocessor controller, power actuator, current transformer and (in multifunction models) fuse and fuse holder.



## SOLID-STATE RELAYS AND POWER UNITS

Solid-state actuators and relays to control resistive/inductive/infrared loads in modern temperature control systems. Complete range up to 250 A.





### GCUBE FIT

#### COMPACT MACHINE CONTROLLER

A compact custom solution for the control and display of medium/small systems and machines.

Process control, data logging, and PLC: all in a single unit.



### GCUBE MODULA

#### INTEGRATED MACHINE CONTROL

An integrated solution designed specifically for medium systems and machines where scalability, multi-protocol communication management, and remote access are essential characteristics.



### GCUBE ADVANCED

#### DISTRIBUTED MACHINE CONTROL

A distributed solution with high refresh rate for use in high-performance systems and machines.

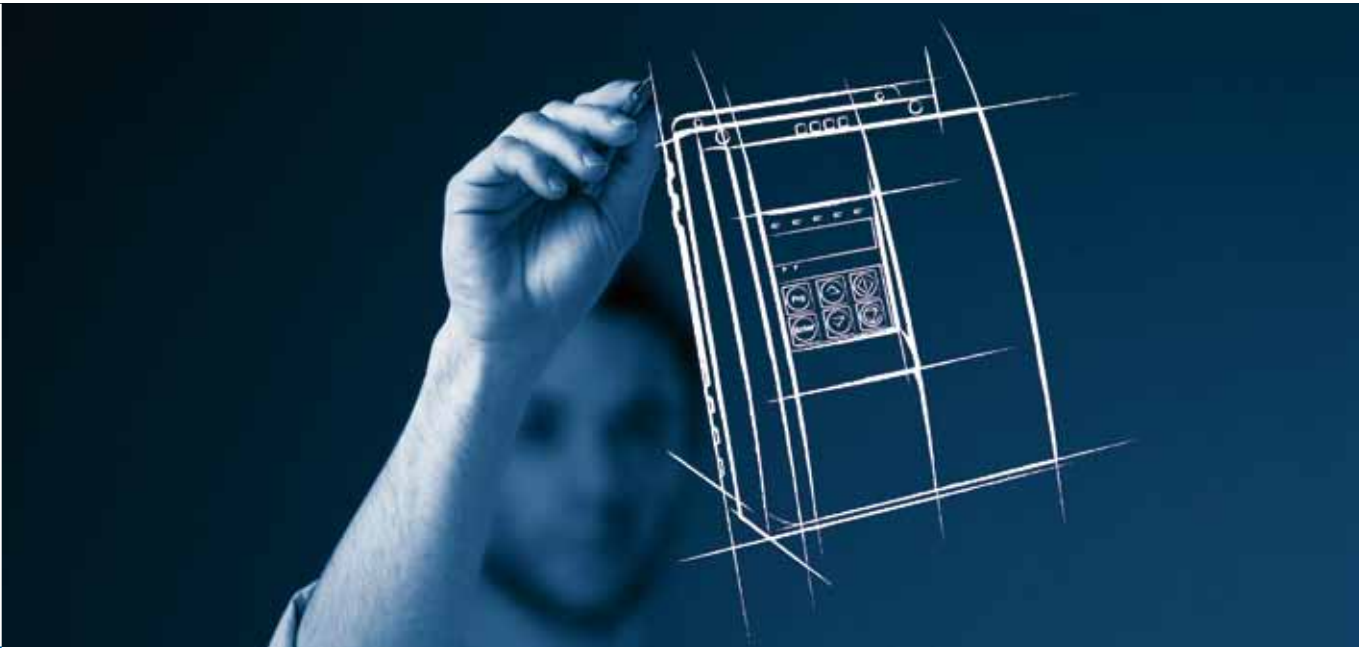
The use of Ethernet-base fieldbuses overcomes the limit of normal protocols and provides a no-compromise solution.



### PROGRAMMING PLATFORM

Gefran automation platforms share a single programming tool. The use of advanced programming languages such as C++ and JAVA, and of programming environments conforming to IEC 61131-3 standards make GF\_Project an open and *user-friendly* development environment.





### INVERTERS

A wide range of field-oriented and sensorless vector inverters ensure high performance for general purpose and custom applications.



### ACTIVE FRONT END INVERTER

Thanks to constant research, Gefran offers a wide range of inverters with AFE (Active Front End) technology for regeneration of dissipated heat.



### SERVODRIVES

Precise and high-performance electronic devices to control brushless motors. Gefran servodrives integrate all typical motion control architecture technologies in a single drive.



### AC, DC, REGENERATIVE CONVERTERS

A line of drives to control DC motors, designed to satisfy the needs of modern industrial systems. Integrates dedicated functions and application packets.



### PV INVERTERS

A complete line of inverters for the photovoltaic sector, available in home and industrial version. Service and assistance complete the offer to the installer.



### LIFT INVERTERS

A range of inverters designed for the civil lifting market. Technology and performance aimed at modern lifting systems and revamping projects.

