

Weld-pad Mounting

MIEPL Make RTD MTR09 accurately sense temperature with an excellent degree of repeatability and interchange ability of elements. The RTD is composed of certain metallic elements whose change in resistance is a function of temperature. This type of RTDs are used to measure surface temperature. A pad is available to sensing temperature.



FEATURES

- Weld-Pad connection
- Mineral insulated
- Exchangeable insert
- Spring loaded design

APPLICATION

- Surface temperature
- Measurement of Heater tubes on flat surfaces
- Power & Utilities

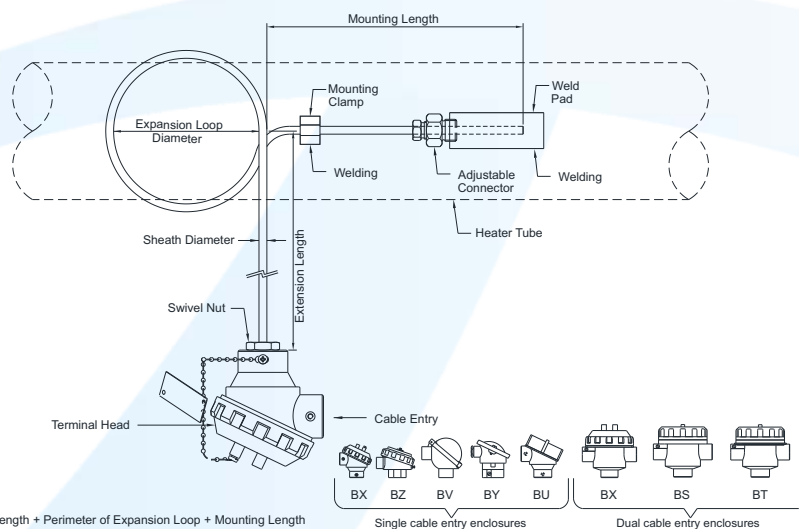
REFERENCE

- IEC-751 / DIN 43760

STANDARD SPECIFICATIONS

Element	: Pt-100, class B
Range	: -200...400°C
Wire combination	: Simplex, 3 Wire
Sheath material	: AISI 316 SS
Sheath diameter	: 6.0 mm
Head enclosure	: Weatherproof, IP 65, threaded cover
Enclosure material	: Die-cast aluminum
Cable entry	: 3/4" ET (F), 1 No.
Mounting type	: Bracket Mounting for Head
Weld pad size	: 50 mm X 25 mm X 25 mm
Weld pad material	: AISI 316 SS
Total length	: 350 mm

DRAWING



ORDERING CODE

	MTR09	PT100B	-XXX	-C	-MF	-M60	-BZ	-ML	-CO
1. ELEMENT	Pt100, Class A	PT 100 A							
	Pt100, Class B	PT 100 B							
	Pt500, Class A	PT 500 A							
	Pt500, Class B	PT 500 B							
	Pt1000, Class A	PT1000 A							
	Pt1000, Class B	PT1000 B							
2. RANGE	-200...400°C		XXX						
	0...600°C		XXX						
3. WIRE COMBINATION	Simplex, 2-Wire			A					
	Simplex, 4-Wire			D					
	Duplex, 3-Wire			H					
	Simplex, 3-Wire			C					
	Duplex, 2-Wire			F					
	Duplex, 4-Wire			I					
4. SHEATH MATERIAL	AISI 316 SS				MF				
	AISI 316L SS				MG				
5. SHEATH DIAMETER	3.0 mm					M30			
	5.0 mm					M50			
	6.0 mm					M60			
	8.0 mm					M80			
6. HEAD ENCLOSURE	WP, IP 65, threaded cover						BZ		
	WP, IP 67, threaded cover						BX		
	Flame proof, IP 67, Gr IIA, IIB						BS		
	Explosion proof, IP 67, Gr IIC						BT		
	WP, IP 65, Hinged type						BV		
	WP, IP 65, cover fitted with 2 screw						BY		
	Ex-Proof to CSA,FM,ATEX [EEx-d]s						BU		
7. ENCLOSURE MATERIAL	Die-cast aluminum							ML	
	AISI 316 SS							MF	
	AISI 304 SS							MC	
8. CABLE ENTRY	¾" ET (F), 1 No.								C0
	½" NPT (F), 1 No.								C1
	M20 x 1.5mm (F), 1 No.								C2
	¾" NPT (F), 1 No.								C3
	¾" ET (F), 2 Nos.								C5
	½" NPT (F), 2 Nos.								C6
	M20 x 1.5mm (F), 2 Nos.								C8
	¾" NPT (F), 2 Nos.								C9

ORDERING CODE

		B1	W2	MF
9. MOUNTING TYPE	Local mounting, no bracket	B0		
	Bracket mounting, for head	B1		
	2" Pipe mounting bracket	B2		
	Surface mounting, for JB	B3		
10. WELD PAD / INTEGRAL COLLAR SIZE	Rectangle, 100 x 25 x 25 mm		W0	
	Rectangle, 100 x 50 x 50 mm		W1	
	Rectangle, 50 x 25 x 25 mm		W2	
	Integral collar, 30 x 19 x 10 mm		W4	
	Integral collar, 40 x 19 x 10 mm		W5	
	Integral collar, 50 x 19 x 10 mm		W6	
11. WELD PAD MATERIAL	AISI 316 SS			MF
	AISI 310 SS			ME
	AISI 446 SS			M6
	Inconel 600			MQ
12. TOTAL LENGTH (TL)	50 mm up to 25,000 mm			XXXXXX
13. OTHER OPTIONS	Plug Fitting For CE, AISI 304 SS			JB
	Plug Fitting For CE, AISI 316 SS			JC
	SC, Cable Gland, Ni-brass WP			JD
	DC, Cable Gland, Ni-brass WP			JE
	SC, Cable Gland, AISI 304 SS WP			JF
	DC, Cable Gland, AISI 304 SS WP			JG
	SC, Cable Gland, AISI 316 SS WP			JH
	DC, Cable Gland, AISI 316 SS WP			JI
	SC, Cable Gland, Ni-brass FP			JJ
	DC, Cable Gland, Ni-brass FP			JK
	SC, Cable Gland, AISI 304 SS FP			JL
	DC, Cable Gland, AISI 304 SS FP			JM
	SC, Cable Gland, AISI 316 SS FP			JN
	DC, Cable Gland, AISI 316 SS FP			JO
	Terminal Head In SS 304			JP
	Terminal Head In SS 316			JQ
	Terminal Head In Cast Iron			JR
	SS base Plate For Transmitter			JS
	Head Mount Transmitter			JT
	Plug Fitting For CE, Aluminum			JU
	Calibration Certificate			SB
	Tag Plate, AISI 304 SS			WF

Ordering Example **MTR09** - **PT100B** - **XXX** - **C** - **MF** **M60** - **BZ** - **ML** - **CO** - **N0** - **4NM**

1. Other sheath diameters, materials and connections are available, please contact factory for details.
2. Not available in Double, 4-Wire combinations.
3. WP = Weatherproof, FP = Flame proof, SC = Single Compression, DC = Double Compression, CE = Cable Entry, JB = Junction Box.
4. Transmitter output shall be 4...20 mA as standard, any other output required, please contact factory for details.