

DN2 SERIES BALL SEATED HYDRAULIC SOLENOID PILOT VALVE



- Specifically designed for Severe Offshore Environments
- Certified for Zone 1, Class 1 Hazardous Areas
- ATEX 94/9/EC
- M.T.B.F., SFF, PFD and SIL Data (Available upon request)
- Easy Installation, Repair and Replacement
- Low Power Consumption (< 1 & 3.5 Watts)
- 316 Stainless Steel Construction
- Wide range of operators available
- 690 bar Max Operating Pressure
- Leak tight
- 1 litre/min

CERTIFICATION OPTIONS AVAILABLE



General Description

The DN2 is a ball seated hydraulic control valve. The stainless steel seat and ceramic ball design ensures a leak tight shut off. The DN2 valve design incorporates a balanced internal piloting system and a lever mechanism to enable low powered operators to switch the valve at high pressures.

The DN2 valve itself features an 'O' ring interface that enables it to be fitted with a 1/4" NPT ported subplate as standard, or manifold mounted for use in wellhead control applications. This interface also allows direct mounting of the DN2 valve to larger pilot-operated DN5 and DN10 valves, whereby increasing the flow capacity up to 40L/min. (Please consult factory for further information).

By removing just 4 bolts the valve can be dismounted without disturbing pipework and possibly contaminating the hydraulic system. Blanking or flushing plates can also be supplied.

DN2 SERIES BALL SEATED HYDRAULIC SOLENOID PILOT VALVE

Ambient Temperature Range

- Standard: -20°C to +60°C (-4°F to +140°F)
- Low temperature option: -50°C (-58°F)

Ingress Protection

- IP66/NEMA 4X

Filtration

- Recommended 10 micron absolute

Construction Materials

- Valve bodies and subplates: 316L Stainless Steel
- Wetted parts: various grades of stainless steel/ceramic
- Fasteners: A4, grade 80 stainless steel
- Springs: stainless steel

Protection Class

- Exd IIC T6 at 60°C
- Exd IIC T4 at 80°C
- EExia IIC T6
- EExd IIC T6
- EExme II T6

Power Consumption

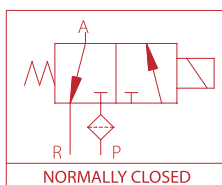
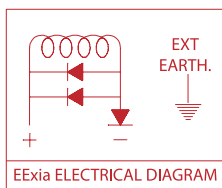
- 1 & 3.5 watts

Operating Pressure Range

- 0 to 690 bar depending on operator type

Operating Medium

- Fluids - Suitable for use with Mineral Oils, Water Glycols and Synthetic fluids



DN2 SERIES BALL SEATED

SCHEMATICS

Note:
Coil can be rotated
through 90° increments
about centreline

